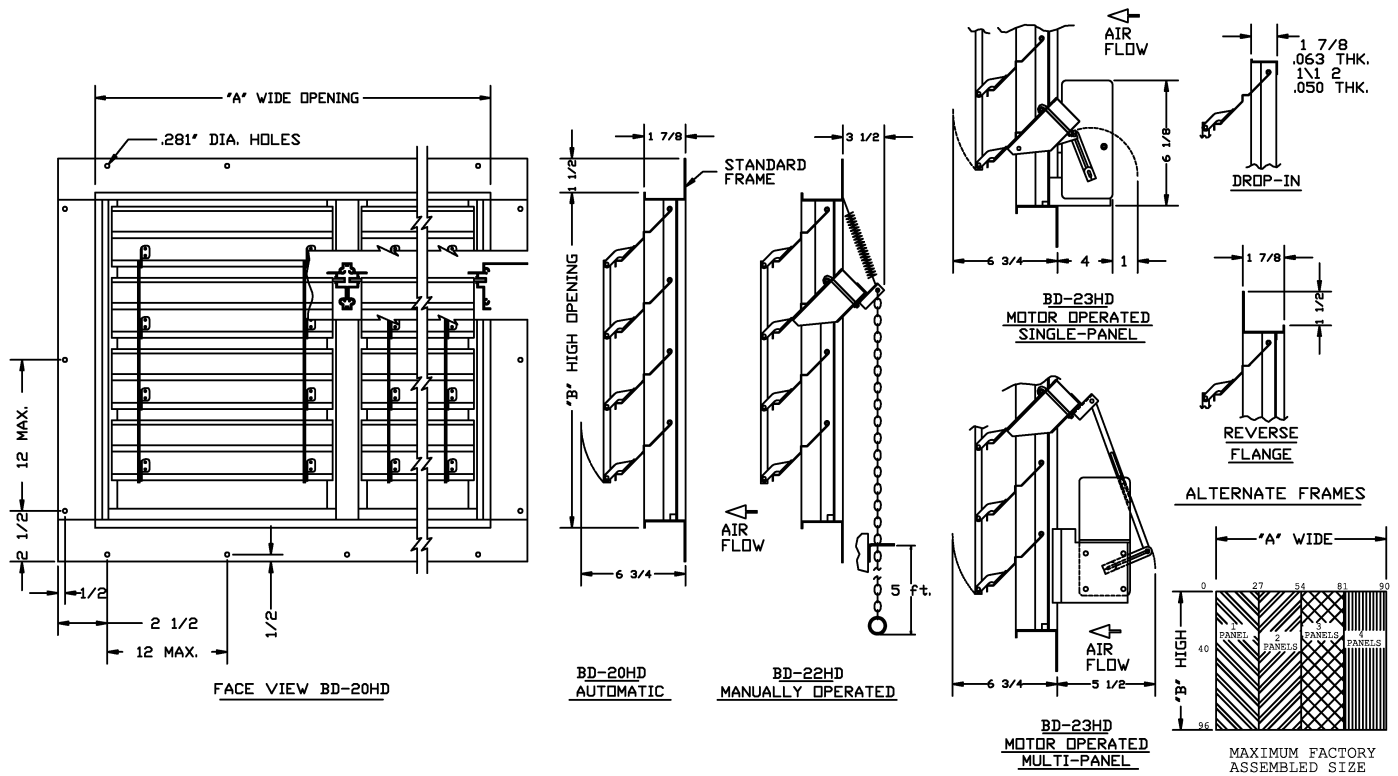


HEAVY DUTY BACKDRAFT DAMPER, SINGLE THICKNESS BLADES, ALUMINUM CONSTRUCTION



AWV ITEM No.	QUANTITY	MODEL No.	"A" WIDE	"B" HIGH	OPTIONS	COMMENTS
					REVERSE FLANGE DROP-IN FRAME MOTOR VOLTAGE	

STANDARD SPECIFICATIONS

FRAME: STANDARD AND REVERSE FLANGE: .063" 6063-T6 EXTRUDED ALUMINUM ALLOY. DROP-IN FLANGE: .050" 6063-T6 EXTRUDED ALUMINUM ALLOY THRU 16 SQ. FT. & .063" 6063-T6 EXTRUDED ALUMINUM ALLOY ABOVE 16 SQUARE FEET.

BLADES: 22 GAUGE ALUMINUM WITH DOUBLE STIFFENING BRACES, MAX. 27" WIDE PANELS.

AXLES: 3/16" DIAMETER FULL LENGTH PLATED STEEL ROD.

BEARINGS: SELF-LUBRICATING HEAVY DUTY NYLON.

LINKAGE: PLATED STEEL BRACKETS, STAINLESS STEEL SHOULDER RIVETS AND ALUMINUM LINKAGE BARS. PANELS 16" WIDE AND ABOVE HAVE DOUBLE LINKAGE.

SEALS: POLYURETHANE SPONGE ON THE SILL AND FELT BETWEEN ADJACENT BLADES.

FINISH: MILL.

ACTUATOR: MANUAL - SPRING CLOSING CHAIN OPERATOR.

OPTIONS: ELECTRIC - SPRING RETURN ACTUATOR AVAILABLE IN 24, 110/220, 440 OR 550 VOLT, SINGLE PHASE 60 HZ. WHEN DAMPER EXCEEDS TWO PANELS WIDE, MULTIPLE ACTUATORS WILL BE SUPPLIED. ACTUATORS MAY BE LINE VOLTAGE OR FURNISHED WITH A TRANSFORMER.

NOTES

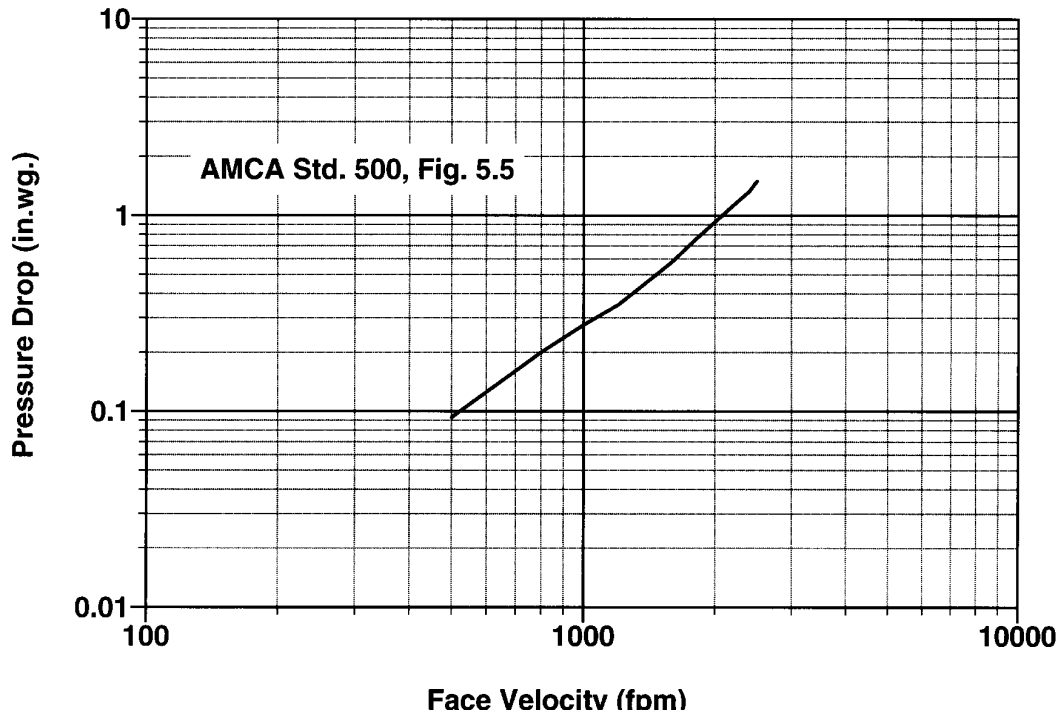
- DESIGN CRITERIA:
 MAXIMUM VELOCITY: 3000 FPM/15.2 m/s
 MAXIMUM DIFFERENTIAL PRESSURE: 1" W.G./250 Pa.
 MAX. TEMP.: 200°F/95°C; WITHOUT ELECTRIC OPERATOR.
 130°F/55°C; WITH FACTORY SUPPLIED STANDARD ELECTRIC ACTUATOR.
- MAXIMUM PANEL SIZES - SEE SIZING CHART.
 MINIMUM PANEL SIZE - 6"W x 6"H.
- "A" AND "B" DIMENSIONS ARE EXACT FRAME DIMENSIONS. WHEN DAMPERS ARE SUPPLIED WITH ALTERNATE FRAMES, THEY WILL BE FABRICATED WITH THE OUTSIDE FRAME DIMENSIONS APPROXIMATELY 1/8" UNDERSIZE.
- ANY VARIATIONS TO THE ABOVE STANDARD SPECIFICATIONS MUST BE FACTORY APPROVED IN ADVANCE.
- DRAWINGS ARE SUBJECT TO CHANGE WITHOUT NOTICE. SPECIFIC INFORMATION FOR ANY COMPONENT OR CONSTRUCTION DETAIL WILL BE FURNISHED UPON REQUEST.
- DAMPERS ARE FOR VERTICAL MOUNT, HORIZONTAL AIR FLOW ONLY.
- USE OF OTHER THAN STANDARD ELECTRIC ACTUATORS MAY EFFECT MAXIMUM TEMPERATURE.
- DAMPER SHOULD BE MOUNTED A MINIMUM OF 1/3 FAN DIAMETER FROM FAN HOUSING.

REV.	DESCRIPTION	DATE	BY	APPD
DATE :				
AWV PROD. No. :				
PROJECT :				
CUSTOMER / ORDER No. :				
ARCH. / ENGR. :				
AGENT / ORDER No. :				
american warming and ventilating A MESTEK COMPANY 7301 INTERNATIONAL DRIVE HOLLAND, OHIO				
BD-20HD, 22HD & 23HD BACKDRAFT DAMPER				
DRN. BY	PRE	DWG. NO.	REV.	
DATE	4-14-08	BD-20HD-1		

PERFORMANCE DATA FOR MODEL BD-20HD

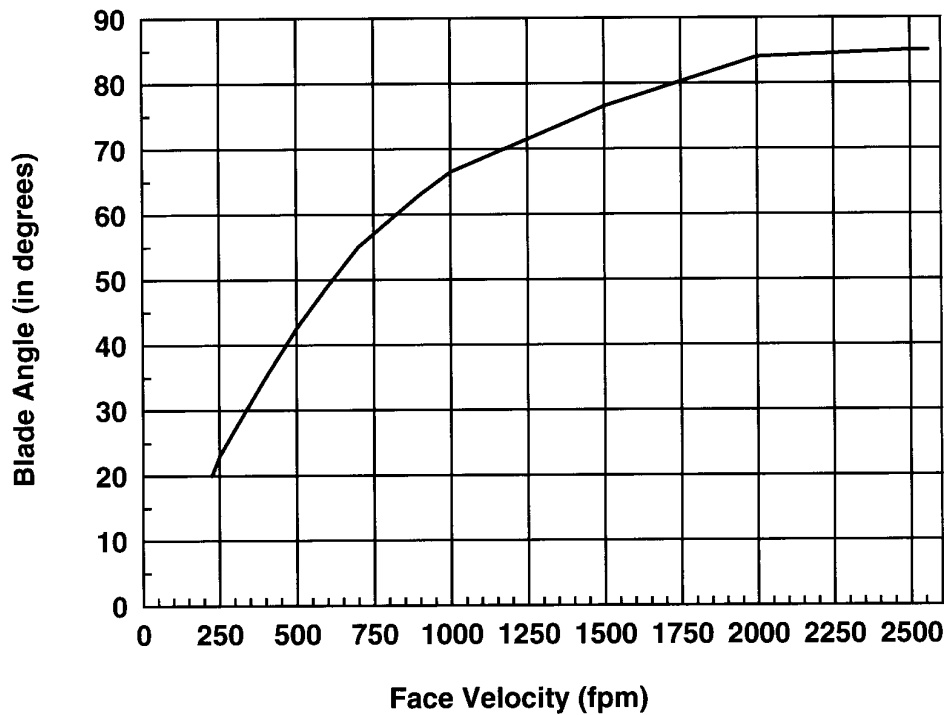
PRESSURE DROP CURVE

(SIZE TESTED 24" X 24")



BLADE ANGLE CURVE

(SIZE TESTED 24" X 24")



awv american warming
and ventilating

A Mestek Company

7301 International Drive • Holland, OH 43528 • Phone: (419) 865-5000 • Fax: (419) 865-1375 • www.awv.com