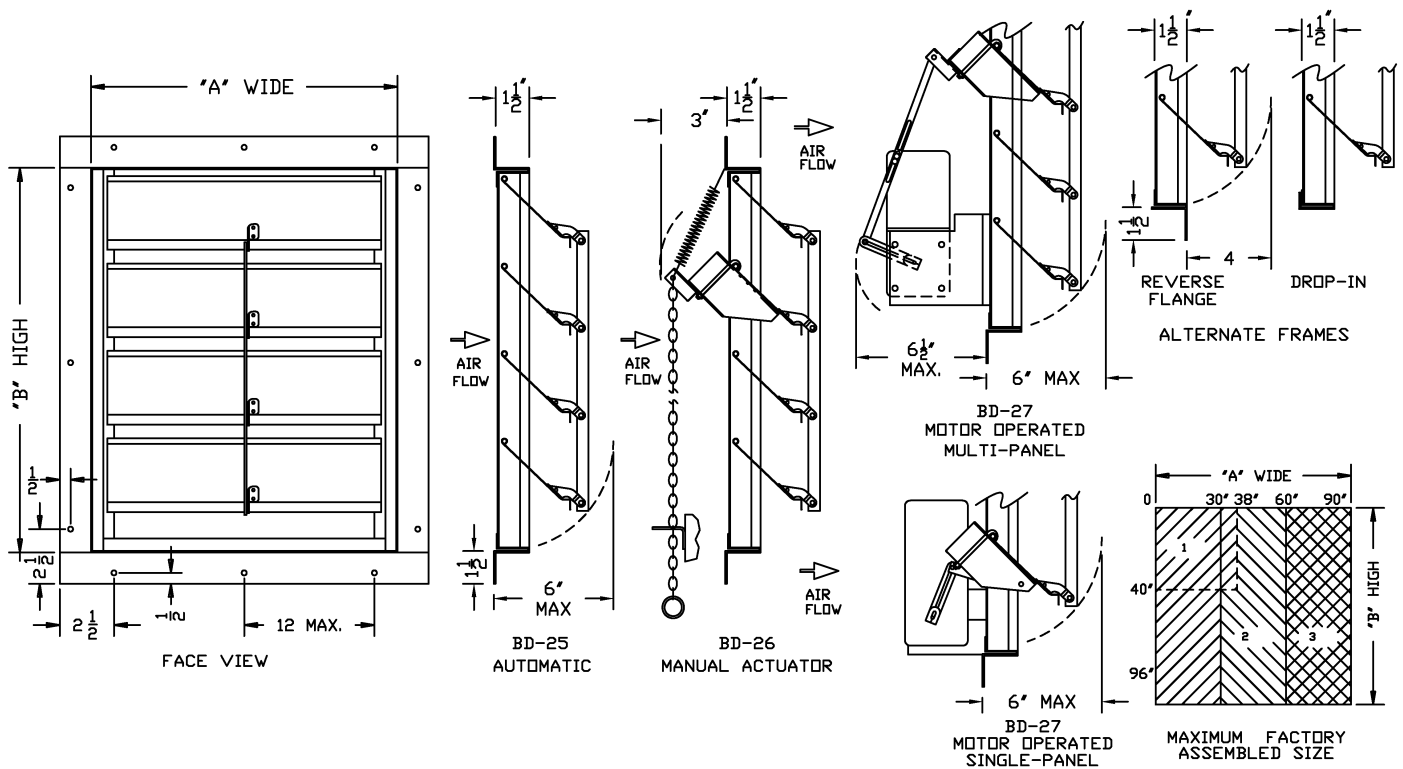


# BACKDRAFT DAMPER, SINGLE THICKNESS BLADES, GALVANIZED STEEL FRAME CONSTRUCTION



AWV ITEM No.	QUANTITY	MODEL No.	"A" WIDE	"B" HIGH	OPTIONS	COMMENTS
					REVERSE FL-ANGE DROP-IN FRAME MOTOR VOLTAGE	

**STANDARD SPECIFICATIONS**

**OUTER FRAME:** STANDARD, REVERSE, & DROP-IN: 14 GAUGE GALVANIZED STEEL.  
**INNER FRAME:** .05 EXTRUDED ALUMINUM.  
**MULLION:** .05 EXTRUDED ALUMINUM.  
**BLADES:** 24 GAUGE ALUMINUM WITH A STIFFENING BRAKE THOUGH 30" WIDE PANELS. 22 GAUGE ALUMINUM WITH DOUBLE STIFFENING BRAKES ABOVE 30" WIDE PANELS.  
**AXLES:** 3/16" DIAMETER FULL LENGTH PLATED STEEL.  
**BEARINGS:** SELF-LUBRICATING HEAVY DUTY NYLON.  
**LINKAGE:** PLATED STEEL BRACKETS, STAINLESS STEEL SHOULDER RIVETS AND ALUMINUM LINKAGE BARS. PANELS UP TO BUT NOT INCLUDING 20"W x 20"H HAVE SINGLE LINKAGE. ALL OTHERS HAVE DOUBLE LINKAGE.  
**SEALS:** POLYURETHANE SPONGE ON THE SILL AND FELT ON ADJACENT BLADES.  
**FINISH:** MILL WITH TOUCH-UP ON WELDS, MILL ON ALUMINUM.  
**ACTUATOR OPTIONS:** MANUAL: SPRING CLOSING CHAIN ACTUATOR. ELECTRIC: SPRING RETURN ELECTRIC ACTUATOR AVAILABLE IN 24, 110/220, 440 OR 550 VOLT, SINGLE PHASE 60 HZ. WHEN DAMPER EXCEEDS TWO PANELS WIDE, MULTIPLE ACTUATORS WILL BE SUPPLIED. ACTUATORS MAY BE LINE VOLTAGE OR FURNISHED WITH TRANSFORMER.

**NOTES**

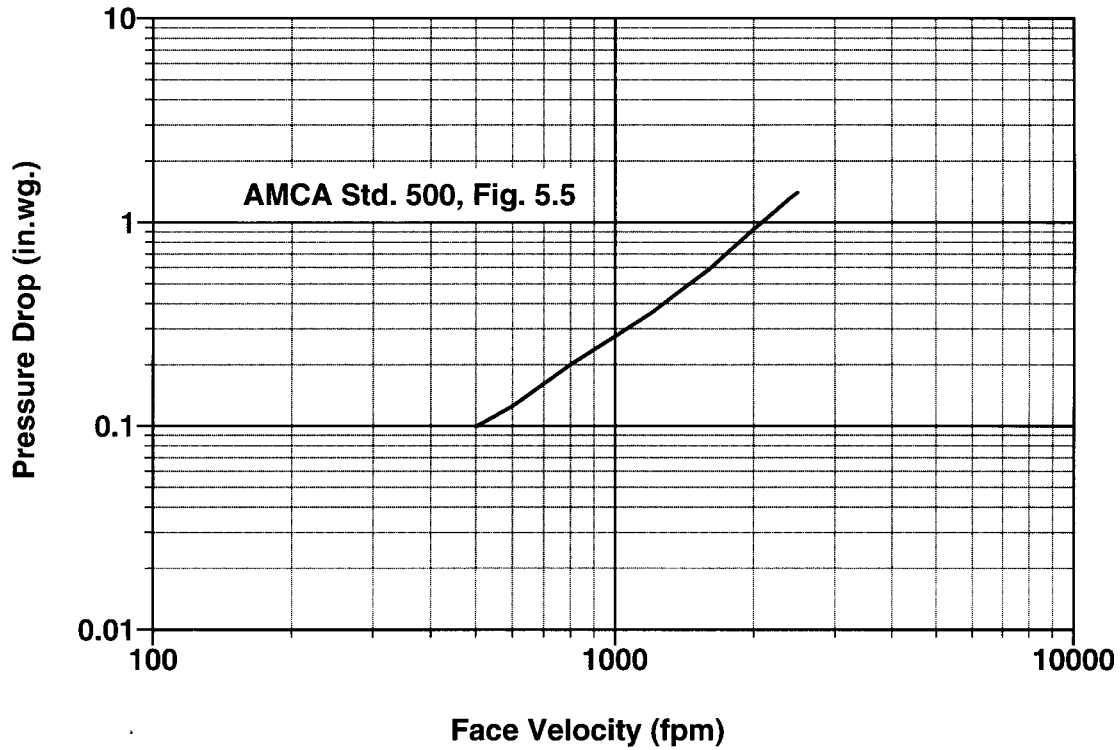
- DESIGN CRITERIA:  
 MAXIMUM VELOCITY: 2500 fpm/13 m/s.  
 MAXIMUM DIFFERENTIAL PRESSURE: 1" w.g./250 Pa.  
 MAXIMUM TEMPERATURE: 200°F/95°C WITHOUT ELECTRIC ACTUATOR.  
 130°F/55°C WITH FACTORY SUPPLIED STD. ELECTRIC ACTUATOR.
- MAXIMUM PANEL SIZE. SEE SIZING CHART.  
 MINIMUM PANEL SIZE: 6"W x 6"H.
- "A" & "B" DIMENSIONS ARE EXACT FRAME DIMENSIONS. WHEN DAMPERS ARE SUPPLIED WITH ALTERNATE FRAMES, THEY WILL BE FABRICATED WITH THE OUTSIDE FRAME DIMENSIONS APPROXIMATELY 1/8" UNDERSIZE.
- ANY VARIATIONS TO THE ABOVE STANDARD SPECIFICATIONS MUST BE FACTORY APPROVED IN ADVANCE.
- DRAWINGS ARE SUBJECT TO CHANGE WITHOUT NOTICE. SPECIFIC INFORMATION FOR ANY COMPONENT OR CONSTRUCTION DETAIL WILL BE FURNISHED UPON REQUEST.
- DAMPERS ARE FOR VERTICAL MOUNT, HORIZONTAL AIR FLOW ONLY.
- USE OF OTHER THAN STANDARD ELECTRIC ACTUATORS MAY AFFECT MAXIMUM TEMPERATURE.
- THE START OPEN SENSITIVITY OF THE DAMPER IS REDUCED SUBSTANTIALLY AND PERFORMANCE ALTERED IF SLEEVE BEARINGS ARE USED.

REV.	DESCRIPTION	DATE	BY
DATE :			
AWV PROD. No. :			
PROJECT :			
CUSTOMER / ORDER No. :			
ARCH. / ENGR. :			
AGENT / ORDER No. :			
<p>A MESTEK COMPANY</p> 7301 INTERNATIONAL DRIVE HOLLAND, OHIO			
<b>BD-25, 26 &amp; 27 BACKDRAFT DAMPER</b>			
DRN. BY	ESS	DWG. NO.	REV.
DATE	3-21-05	BD-25-1	

# PERFORMANCE DATA FOR MODEL BD-25

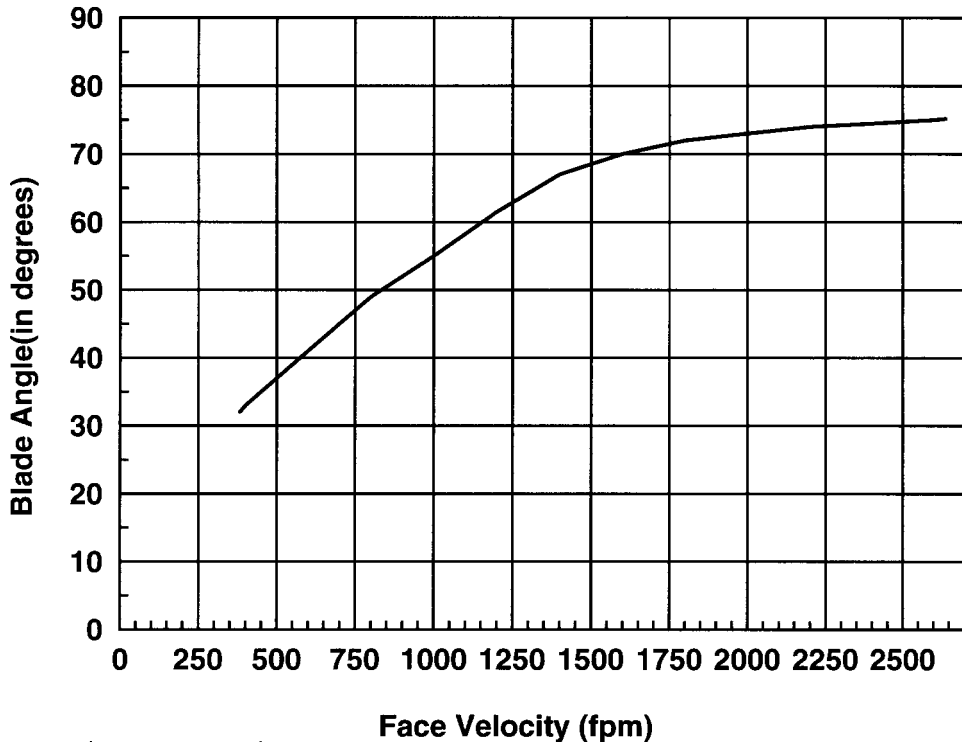
## PRESSURE DROP CURVE

(SIZE TESTED 24" X 24")



## BLADE ANGLE CURVE

(SIZE TESTED 24" X 24")



**awv** american warming  
and ventilating

A Mestek Company

7301 International Drive • Holland, OH 43528 • Phone: (419) 865-5000 • Fax: (419) 865-1375 • [www.awv.com](http://www.awv.com)