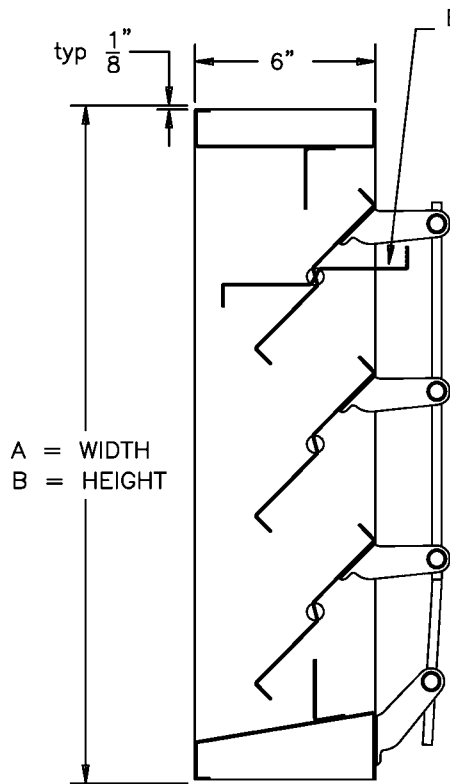


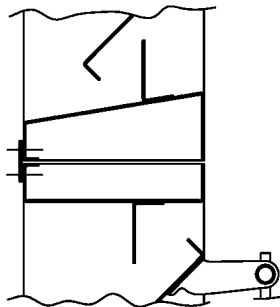
GALVANIZED STEEL, 6" DEEP, HEAVY GAUGE, J/K FULL OPEN ADJUSTABLE TYPE BLADE



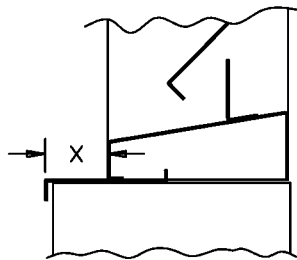
SECTION VIEW

MODEL LF-99A STANDARD SPECIFICATIONS

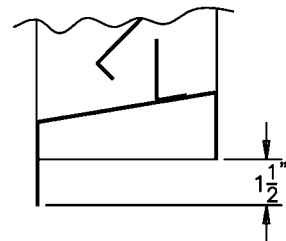
- FRAME: 6" DEEP CHANNEL, 16 GAUGE GALVANIZED STEEL.
- BLADES: 16 GAUGE GALVANIZED STEEL.
- FINISH: MILL WITH TOUCH UP ON WELDS.
- SCREEN: 1/2" REMOVABLE EXPANDED ALUMINUM BIRD SCREEN, LOCATED ON EXTERIOR.
- AXLES: 1/2" DIAMETER PLATED STEEL.
- BEARINGS: POLYMER PLASTIC SPLIT.
- LINKAGE: PLATED STEEL BRACKETS, BRASS BARRELS, AND 5/16" DIAMETER PLATED STEEL LINKAGE ROD.
- ACTUATOR: INDIVIDUAL PANEL WING NUT. SEE ACTUATOR BULLETIN FOR OTHER SELECTIONS.
- MAX PANEL SIZE: 60" x 96" W/O SEALS OR W/BLADE SEALS ONLY.
48" x 96" WITH BLADE & JAMB SEALS.
- MIN. PANEL SIZE: 12" x 12".
- DIMENSIONS: "A" (WIDTH) AND "B" (HEIGHT) ARE OPENING SIZES. LOUVERS ARE MADE 1/2" UNDERSIZE.



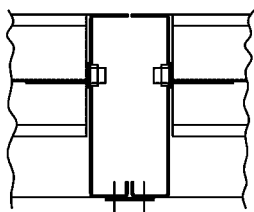
STANDARD HORIZONTAL
MULLION



EXTENDED SILL
OPTIONAL



FLANGED FRAME
OPTIONAL
(JAMB SHOWN)



STANDARD VERTICAL
MULLION

awv

american warming
and ventilating

A MESTEK COMPANY

7301 INTERNATIONAL DRIVE HOLLAND, OHIO
Phone (419) 865-5000 Fax (419) 865-1375

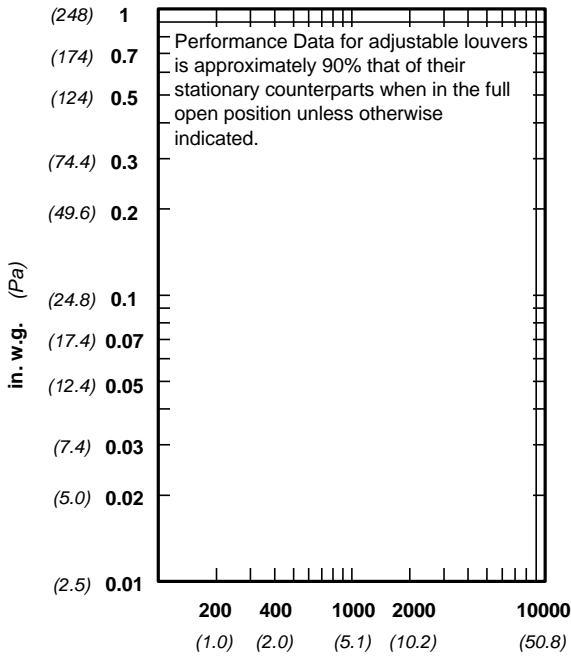
LF-99A ADJUSTABLE LOUVER

DRN. BY ESS	DWG. NO. LF-99A	REV.
DATE 12-18-00		

Water Penetration Pressure Drop : Performance Data for adjustable louvers is approximately 90% that of their stationary counterparts when in the full open position unless otherwise indicated.

Free Area : 10.56 sq ft (0.981 sq m) = 66% for 48" x 48" (1.22m x 1.22m) test size

INTAKE PRESSURE DROP



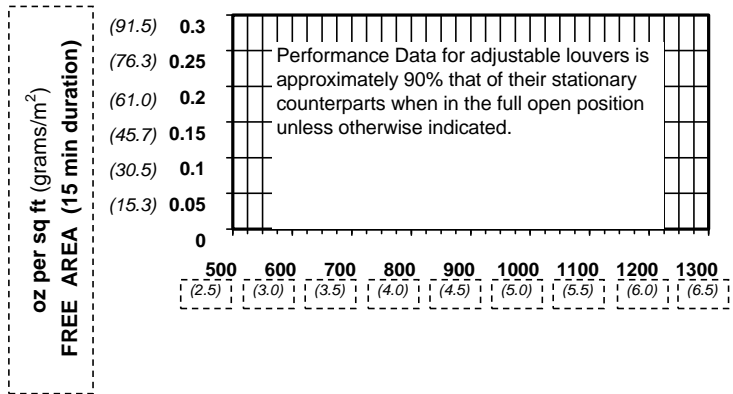
FREE AREA IN SQUARE FEET (sq meters)

HEIGHT	WIDTH								
	in. mm	12 305	18 457	24 610	30 762	36 914	42 1067	48 1219	60 1524
12	0.33	0.54	0.75	0.96	1.18	1.39	1.60	2.02	
	305	0.031	0.050	0.070	0.089	0.110	0.129	0.149	0.188
24	0.94	1.55	2.15	2.76	3.37	3.98	4.58	5.80	
	610	0.087	0.144	0.200	0.256	0.313	0.370	0.425	0.539
36	1.55	2.55	3.55	4.56	5.56	6.57	7.57	9.58	
	914	0.144	0.237	0.330	0.424	0.517	0.610	0.703	0.890
48	2.16	3.56	4.96	6.36	7.76	9.16	10.56	13.35	
	1219	0.201	0.331	0.461	0.591	0.721	0.851	0.981	1.240
60	3.07	5.07	7.06	9.05	11.05	13.04	15.03	19.02	
	1524	0.285	0.471	0.656	0.841	1.027	1.211	1.396	1.767
72	3.68	6.07	8.46	10.85	13.24	15.63	18.02	22.80	
	1829	0.342	0.564	0.786	1.008	1.230	1.452	1.674	2.118
84	4.29	7.08	9.86	12.65	15.43	18.22	21.00	26.57	
	2134	0.399	0.658	0.916	1.175	1.433	1.693	1.951	2.468
96	4.90	8.08	11.27	14.45	17.63	20.81	23.99	30.35	
	2438	0.455	0.751	1.047	1.342	1.638	1.933	2.229	2.820

VELOCITY THROUGH FREE AREA fpm (m/s)

standard air- .075 lbs per cu ft
Ratings do not include the effect of a wire bird screen
Test based on a 48" x 48" test size per AMCA Standard 51

WATER PENETRATION



Leakage:

We have shown two leakage values for the louver sizes below. The upper values with blade seals, and lower values are with optional blade and jamb seals. Values were derived from tests performed in accordance with AMCA 500. Values are in total (CFM) at 1 in wg differential pressure.

TOTAL LEAKAGE IN SCFM @ 1 IN WG DP
CLOSING TORQUE IN inch/pounds

Openings that require multiple louver panels in both width and height will require internal structural supports. It is recommended that large openings be divided with structural members so that the louvers will span either width or height with a single panel. Unusually high wind loading may require maximum panel size to be reduced, check with factory before ordering Structural supports and mounting accessories are not supplied by AWW as a standard.

Operating Force Factor:

Louvers are normally operated by applying a force to the blade to blade linkage whereas dampers are driven through the blade axles. Because of this fact, simple operating torques cannot be published. The factors shown are to be used with the data shown in our louver actuator selection guide found in our louver actuator price list.

HEIGHT		WIDTH				
		SEALS	12	24	36	48
12	BLADE	71	98	125	152	178
	BLD & JMB	25	34	45	58	n/a
24	BLADE	162	228	295	362	429
	BLD & JMB	73	100	129	159	n/a
36	BLADE	262	382	502	622	742
	BLD & JMB	113	158	206	258	n/a
48	BLADE	352	512	672	832	992
	BLD & JMB	161	223	289	357	n/a
60	BLADE	452	663	829	1092	1306
	BLD & JMB	201	283	369	457	n/a
72	BLADE	542	795	1049	1303	1556
	BLD & JMB	251	351	456	563	n/a
84	BLADE	642	949	1256	1563	1870
	BLD & JMB	296	415	543	672	n/a
96	BLADE	732	1079	1426	1773	2120
	BLD & JMB	338	474	618	764	n/a

HEIGHT		WIDTH				
		SEALS	12	24	36	48
12	BLADE	19	41	64	87	111
	BLD & JMB	27	60	91	125	n/a
24	BLADE	58	127	196	265	339
	BLD & JMB	92	188	281	373	n/a
36	BLADE	85	185	286	386	494
	BLD & JMB	136	274	408	548	n/a
48	BLADE	125	271	418	565	722
	BLD & JMB	198	400	597	800	n/a
60	BLADE	152	329	508	686	877
	BLD & JMB	242	485	724	970	n/a
72	BLADE	191	416	640	864	1105
	BLD & JMB	304	611	912	1222	n/a
84	BLADE	218	474	730	985	1261
	BLD & JMB	347	696	1039	1393	n/a
96	BLADE	258	560	862	1163	1489
	BLD & JMB	410	823	1226	1645	n/a