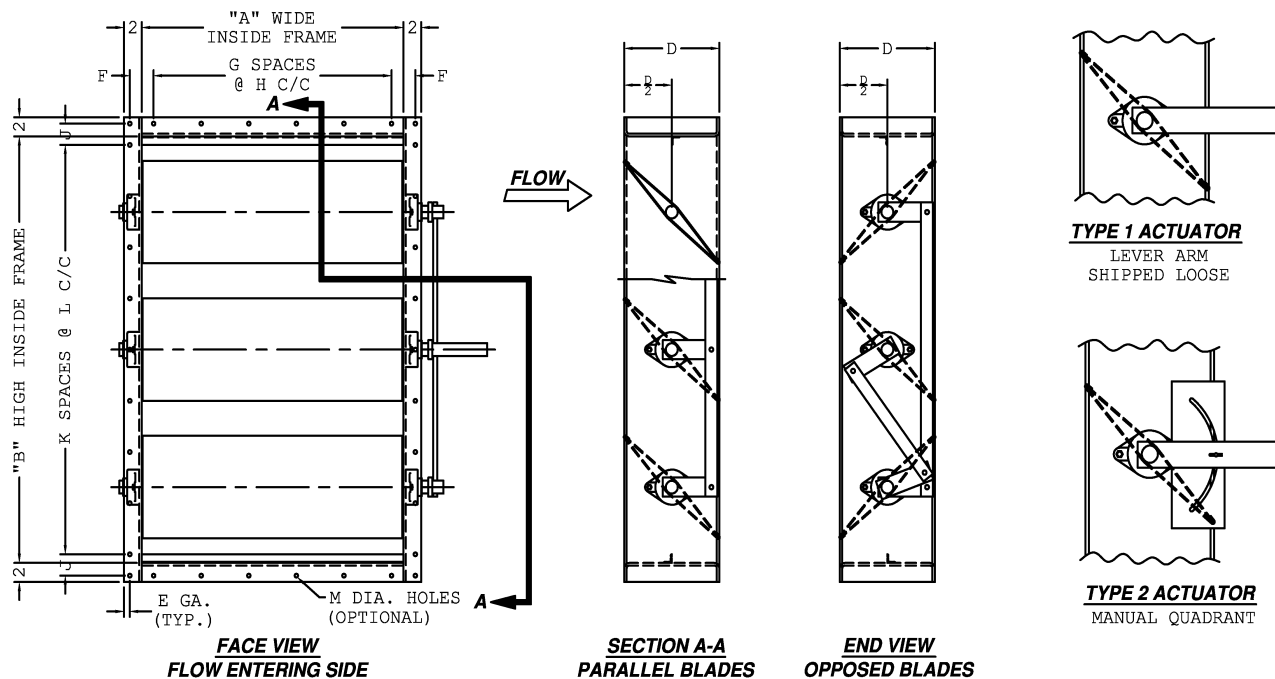


HEAVY DUTY VOLUME CONTROL DAMPER, 8,000+ FPM VELOCITY 25+" W.G. DIFF. PRESS., 300°F+ TEMP., 120" X 120" SIZES



AWV ITEM No.	QUANTITY	"A" WIDE INSIDE FRAME	"B" HIGH INSIDE FRAME	"C" WIDE FLANGE	"D" FRAME DEPTH	FRAME GAUGE	No. OF BLADES	BLADE GAUGE	AXLE DIAMETER	PARALLEL (P) OR OPOSED (O)	E	F	G	H	J	K	L	M	OPTIONAL MOUNTING HOLE DIMENSIONS	OPTIONS	COMMENTS	
																				1 FLANGE AIR ENTERING SIDE <input type="checkbox"/>		
																				1 FLANGE AIR LEAVING SIDE <input type="checkbox"/>		
																				BOTH FLANGES <input type="checkbox"/>		

VC-51 STANDARD SPECIFICATIONS

FRAME: FABRICATED CHANNEL FRAME. DAMPER FRAMES ARE STANDARD WITHOUT MOUNTING HOLES, PLEASE SPECIFY IF MOUNTING HOLES ARE REQUIRED.

BLADES: FABRICATED STEEL, AIRFOIL TYPE, BOLTED OR WELDED TO AXLE. VARIOUS BLADE PACKAGE DESIGNS ARE AVAILABLE TO OFFER THE MOST ECONOMICAL DESIGN FOR DESIGN REQUIREMENTS SPECIFIED.

AXLES: ALLOY STEEL. FULL LENGTH AND STUB DESIGNS ARE AVAILABLE.

BEARINGS: RELUBRICABLE BALL BEARINGS ARE STANDARD. OTHER BEARINGS ARE AVAILABLE IF REQUIRED.

LINKAGE: HEAVY DUTY TYPE, ALLOY STEEL BARS WITH STAINLESS STEEL PINS AND OIL IMPREGNATED BRONZE BEARINGS.

STOPS: FORMED ANGLE AT HEAD AND SILL.

SEALS: AS REQUIRED TO MEET DESIGN REQUIREMENTS.

FINISH: (1) COAT OF AWV STANDARD SHOP PRIMER.

ACTUATOR: MANUAL, ELECTRIC OR PNEUMATIC OPERATORS ARE AVAILABLE. PLEASE SPECIFY WHEN ORDERING.

REV.	DESCRIPTION	DATE	BY
DATE:			
AWV PROD. No.:			
CUSTOMER:			
CUSTOMER ORDER No.:			
AGENT:			
AGENT ORDER No.:			
american warming and ventilating A MESTEK COMPANY 7301 INTERNATIONAL DRIVE HOLLAND, OHIO www.awv.com P:419-865-5000 F:419-865-1375			
VC-51 VOLUME CONTROL DAMPER			
DRN. BY	DWG. NO.	REV.	
SJA	VC-51-1		
DATE			
9-9-04			