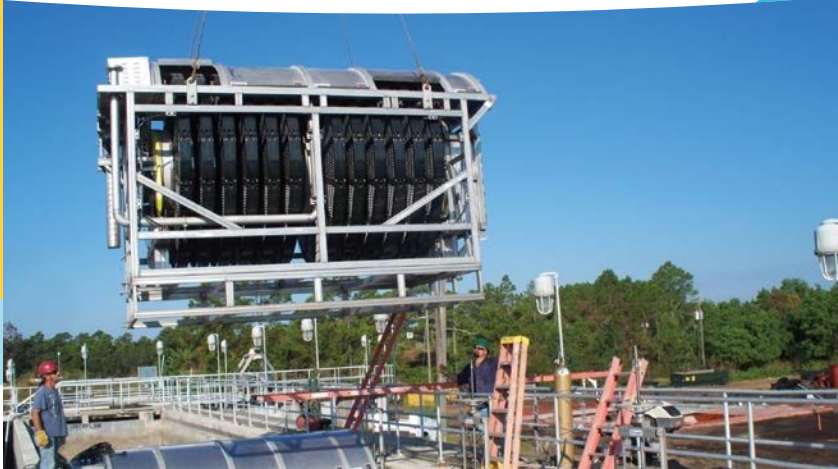




eVOQUA
WATER TECHNOLOGIES



Drop-in Simplicity of Forty-X™ Disc Filters

CONVERT SAND FILTER SYSTEMS TO FORTY-X™ DISC FILTERS

INCREASE FILTRATION CAPACITY AND PERFORMANCE IN EXISTING FOOTPRINT

Application & Installation Options:

- Expand filtration capacity
- Meet stricter effluent limits
- Retrofit Traveling Bridge filters
- Retrofit Deep Bed Sand filters
- Retrofit into Chlorination Basins
- Retrofit into Rectangular Clarifiers

Forty-X™ Disc Filter Advantages:

- 40% more filtration capacity when compared to flat panel designs
- Drop-in simplicity with little or no structural modifications
- Can accommodate existing hydraulic profile
- Increases capacity of an existing sand filter up to 3 times
- Easy operation & maintenance
- Suitable for water reuse
- Title 22 approved

Contact: Joey Herndon, Business Development
Tel: +1.229.227.8727
Email: joseph.herndon@evoqua.com

Schedule an on-site equipment evaluation

DAVCO™
an eVOQUA brand



Filtration Capacity to Spare



The Forty-X™ Disc Filter includes a high-rate pleated, woven media filtration panel with an inside-out flow configuration

RETROFIT, REHAB AND UPGRADE SOLUTIONS

TURNING WHAT YOU HAVE INTO WHAT YOU WANT

Evoqua's wastewater equipment business is rooted in the first chain system applied to a wastewater plant. A REX® system from the Chain Belt Company, a precursor to Envirex®, was installed in 1910 and operated for almost seventy years with the support of our experts and aftermarket services.

Our team has helped develop successful water and wastewater treatment systems for over 100 years using well known technologies. Our industry leading database of OEM drawings provides for faster, more cost effective and responsive project execution.

OEM Brands You Know

Envirex® | Davco™ | Jet Tech | Link-Belt® | REX® | PFT | Lyco

Circular Clarifiers | Chain & Scrapers | Disc Filters | Sand Filters | Anaerobic Digestion
Brush Rotors Conversions | Disc Aerators | Screw Pumps | RBCs | Field Erect Plants

WE ARE READY TO RESPOND

**Schedule an on-site equipment evaluation
or connect with a product expert at:**

www.evoqua.com/retrofit



2607 N. Grandview Blvd., Suite 130, Waukesha, WI 53188

www.evoqua.com/retrofit

Envirex, Forty-X and Davco are trademarks of Evoqua, its subsidiaries or affiliates, in some countries

Link-Belt is a trademark of Link-Belt Construction Equipment Company, L.P., LLC

REX is a trademark of Rexnord Industries, LLC

The information provided in this brochure contains merely general descriptions or characteristics of performance which in actual case of use do not always apply as described or which may change as a result of further development of the products. An obligation to provide the respective characteristics shall only exist if expressly agreed in the terms of contract.

© 2015 Evoqua Water Technologies LLC Subject to change without notice MU-FORTYX-DS-0315